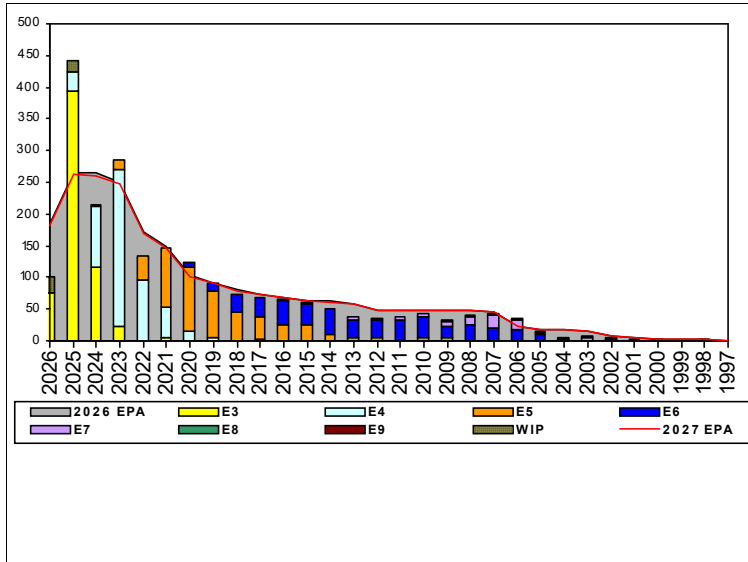


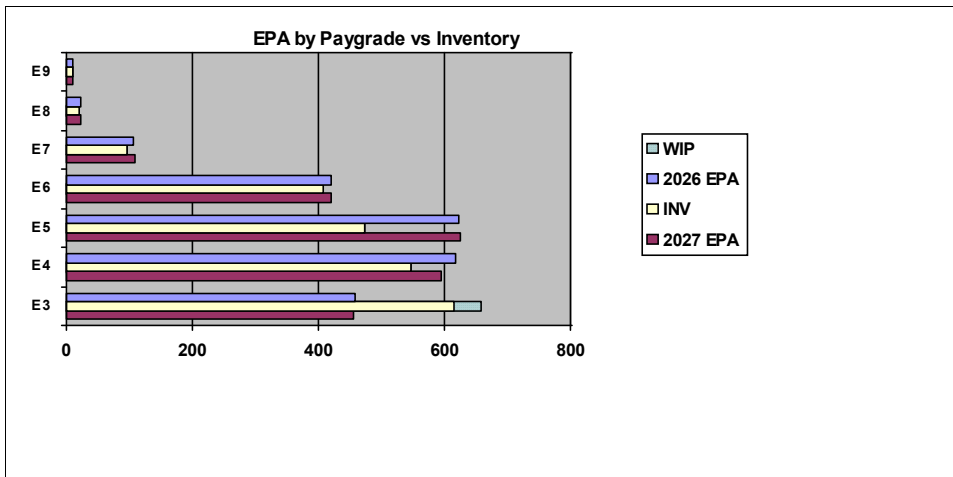
Interior Comm Electrician - B230



Sea Shore Flow		
TOUR	SEA	SHORE
1ST	60	36
2ND	60	36
3RD	48	36
4TH	48	36
5TH	36	36
6TH	36	36
7TH	36	36

FORCE STRUCTURE MANNING TO BA										
PG	SEA	INV	BA	SHORE	INV	BA	SEA + SHORE	TOTAL INV	TOTAL BA	
E1-3	123.6%	262	212	207.7%	27	13	128.4%	289	225	
E4	75.2%	466	620	91.3%	42	46	76.3%	508	666	
E5	76.0%	269	354	78.9%	180	228	77.1%	449	582	
E6	79.4%	189	238	129.3%	181	140	97.9%	370	378	
E7	100.0%	35	35	81.3%	52	64	87.9%	87	99	
E8	70.0%	7	10	120.0%	12	10	95.0%	19	20	
E9	150.0%	6	4	71.4%	5	7	100.0%	11	11	
Total	83.8%	1234	1473	98.2%	499	508	87.5%	1733	1981	

TIS to PG Years	Pay Grade	E1-E3	E4	E5	E6	E7	E8	E9
TIG to PG Years	IC	TIS	2.0	4.4	9.2	15.1	18.9	23.5
	ALL Navy	TIG	1.3	1.8	4.6	5.7	5.0	4.6
	IC	TIG	1.0	2.7	4.8	6.5	4.9	4.4



Zone Info	ZONE A	ZONE B	ZONE C	ZONE D	ZONE E	ALL ZONES
FY26 Manning:	103.0%	97.0%	83.0%	80.0%	76.0%	96.0%
FYTD RENL Rate:	41.2%	79.4%	76.2%	95.2%	16.7%	59.9%

NOTES

Conversions: Submittal are 13-18 Months from PRD.
 Retirements: Should match SEAOS/PRD or extraordinary circumstances.
 SEM/BBA: These programs are advancement opportunities program not an advancement guarantee, apply early and often to stay competitive.
 ECM/TECAD: ETCM Parsons, Seth A. "Casper"

	E1-3	E4	E5	E6	E7	E8	E9	TOTAL
% INV to FY26 EPA	134%	88%	76%	97%	90%	86%	100%	96%
EPA (FY26)	457	618	623	421	106	22	11	2258
INVENTORY	614	546	474	407	95	19	11	2166
EPA (FY27)	456	593	624	421	108	22	11	2235
% INV to FY27 EPA	135%	92%	76%	97%	88%	86%	100%	97%
INV + WIP / FY26 EPA	144%							98%
INVENTORY	658	44 ← E-3 and Below WIP						2210
INV + WIP / FY26 EPA	144%							99%